

# aiSon™ Focus

The world's only  
adaptive ultrasound pad

## Improve your diagnosis

- Prevents image deformation due to compression of tissues by probe pressure
- Provides full, uninterrupted images with fewer artifacts, even when scanning bony surfaces
- Increases image contrast of superficial structures
- Enhances consistency in results from operators with different degrees of experience

## Optimise procedures

- Ensures continuous contact with the skin throughout the procedure, even on bony surfaces
- Facilitates proper standards of care for ultrasound-guided interventions
- Moves smoothly with the probe
- Can accelerate image acquisition in challenging areas
- Reduces gel re-application
- Protects the probe
- Allows dynamic shift of focus
- Enables tracing of anatomical structures without interruption

## Ensure patient comfort, even in painful areas

- Enables reduced pressure to avoid compressing sensitive areas
- Requires less gel

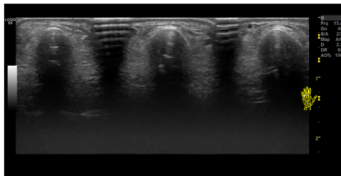


Adaptive shape maximizes contact of the probe with the skin  
Made of highly flexible and robust latex-free material.  
Sustains up to 20 kg of pressure

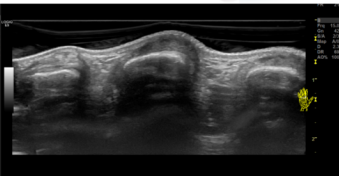
Compatible with any coupling agent,  
including antiseptic

Attachable to the probe  
Easy and quick set-up and removal

Suitable for all standard transducers



Without aiSon™ Focus



With aiSon™ Focus